



HARVARD®

Love is ...



**... when you
don't notice
how fast
time flies.**

**Harvard
Cement
The Original.
Since 1892.**



Made in Germany

EN

Harvard Cements

Harvard Cement normal setting

Zinc phosphate cement for permanent luting of crowns and bridges and for lining.

Properties

- High compressive strength
- Low film thickness
- Good biocompatibility
- Easy and safe application
- Unmatched price performance ratio
- No curing shrinkage

The classic!
Clinically proven
since 1892



15 ml / 40 ml

Harvard Cement quick setting

Zinc phosphate cement with reduced setting time for permanent luting of crowns and bridges.

Properties

- Fast setting
- High compressive strength
- Low film thickness
- Good biocompatibility
- Easy and safe application
- Unmatched price performance ratio
- No curing shrinkage

Short
setting time!



15 ml / 40 ml

Harvard Cement OptiCaps®

Zinc phosphate cement in capsules for permanent luting of crowns and bridges.

Properties

- Consistent application with only 10 seconds mixing time
- Direct and precise application of creamy, Homogeneous cement on the restoration
- Avoids mistakes in mixing and dosing
- Sufficient for luting of 1 - 2 crowns from each capsule

Optimal
consistency &
easy
Handling



10 x 0.5 g

50 x 0.5 g

Harvard Polycarboxylat Cement

Zinc polycarboxylate cement for permanent luting and lining.

Properties

- Non irritant for sensitive teeth
- Easy and safe application
- Unmatched price performance ratio



15 ml / 40 ml

Indications of Harvard Cement

- For permanent luting of crowns and bridges, inlays and onlays on natural core and for luting supraconstructions on implants. For crowns, bridges, inlays and onlays made of:
 - zirconia
 - aluminium oxide
 - lithiumdisilicate
 - silicate
 - for conventional gold and non-precious metals

Harvard Cement normal setting additional qualified:

- For temporary fillings in posterior teeth
- As liner for all types of filling materials

Indications of Harvard Polycarboxylat Cement

- Indications of Harvard Polycarboxylat Cement For permanent luting of crowns and bridges, inlays and onlays on natural core and for luting supraconstructions on implants. For crowns, bridges, inlays and onlays made of:
 - zirconia
 - aluminium oxide
 - lithiumdisilicate
 - for conventional gold and non precious metals
- For temporary fillings in posterior teeth
- As liner for all types of filling materials

Mixing Advices



Tip:

use a cold glass plate, especially in warm countries.

For Harvard Cement

1. Pulver Dispense onto a clean, dry glass plate powder and liquid at approx. 23 °C / 73 °F.
2. Divide into 4 portions as follows: 1/2, 1/4, 1/8, 1/8.
3. Mixing: start first 1/8 with the whole liquid quartely within 15 seconds.
4. Add second 1/8 and mix for 15 seconds while spreading.
5. Draw 1/4 into the mixture.
6. Mix while pressing with flat spatula in the next 30 seconds.
7. Mix with the remaining half portion for 30 seconds to obtain an homogen mass.
8. Use the entire surface of glass plate.
9. Ready-for-use cement mix within 90 seconds.

Harvard Cement normal setting:

For luting consistency: powder 1.5 g, liquid 1.0 g
For cavity lining consistency: powder 2.1 g, liquid 1.0 g

Harvard Cement quick setting:

For luting consistency: powder 1.8 g, liquid 1.0 g

For Harvard Polycarboxylat Cement

For mixing of polycarboxylate cement the whole amount of powder is divided into two equal halves. One half is further divided into two equal parts (quarter).

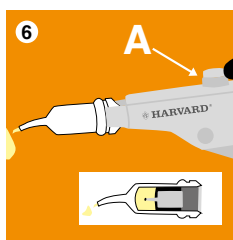
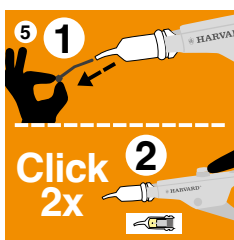
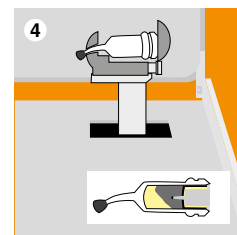
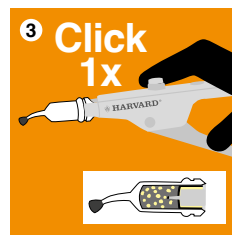
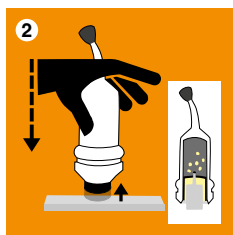
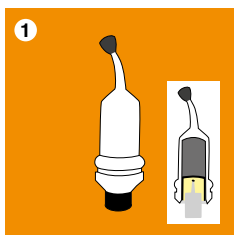
In 30 seconds mix one half of the powder into the liquid. Then the other two quarters are mixed in for another 15 seconds each. This will result in a total mixing time of 60 seconds.

The mixing ratio (by weight) of powder to liquid is 2.9 : 1 (luting cement) or 3.6 : 1 (liner).

Activating & Mixing – Harvard OptiCaps®



Click before you mix. Instructions for activating and mixing Harvard OptiCaps®





1. OptiCaps® before activation.
2. Activation: press the plunger on a hard and plane surface to the end into the OptiCaps®.
3. Insert the OptiCaps® into the Harvard Applier OptiCaps® and click once to standardize.
4. To mix capsule.
5. Insert the OptiCaps® into the Harvard Applier OptiCaps®. Remove the pin from the nozzle. If not, capsule can burst.
6. Extrude the mixed material on a glass plate or apply directly. Unlock the gun and remove the capsule.



Working times for Harvard Cement OptiCaps®


Mixing time	Working time	Next clinical step
10 sec	90 sec (1:30 min) from the start of mixing (23 °C /73 °F)	n/a

Order informations:


Harvard Cement


Harvard Cement normal setting		
Powder	Single powder	Clinic powder
Shade 	35 g	100 g
1 - White	7002501	7002201
2 - Bluish white		7002202
3 - Yellowish white	7002503	7002203
4 - Light yellow	7002504	7002204
5 - Yellow		7002205
Liquid	Single liquid	Clinic liquid
	15 ml	40 ml
	7002600	7002300

Harvard Cement quick setting		
Powder	Single powder	Clinic powder
Shade 	35 g	100 g
1 - White	7001501	7001201
2 - Bluish white		7001202
3 - Yellowish white	7001503	7001203
4 - Light yellow		7001204
5 - Yellow		7001205
Liquid	Single liquid	Clinic liquid
	15 ml	40 ml
	7001600	7001300

Harvard Cement OptiCaps®	
ea. packed in an aluminum pouch 	
10 OptiCaps® ea. 0.5 g, Shade 3 - Yellowish white	7081310
50 OptiCaps® ea. 0.5 g, Shade 3 - Yellowish white	7081350
Harvard Applier OptiCaps®	7092000

Polycarboxylat Cement

Powder	Single powder	Clinic powder
Shade 	35 g	100 g
3 - Yellowish white	7031503	7031203
4 - Light yellow	7031504	7031204

Liquid	Single liquid	Clinic liquid
	15 ml	40 ml
	7031600	7031300

Harvard Distribution Partner.



HARVARD®

Marke und Qualität seit 1892

Harvard Dental International GmbH
Margaretenstr. 2 - 4, 15366 Hoppegarten, Germany
Phone: + 49 (0) 30/99 28 978-0
Fax: + 49 (0) 30/99 28 978-19
info@harvard-dental-international.de



www.harvard-dental.de

EN_03/23