

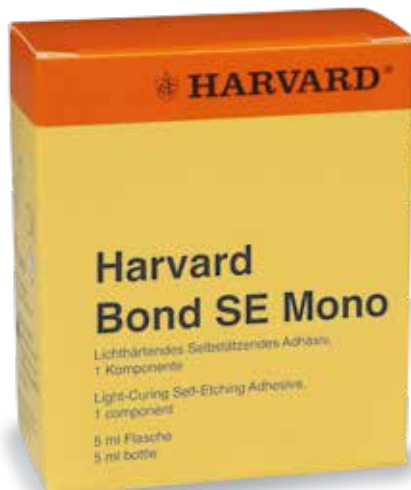


Harvard Bond SE Mono

Self-etch light cure bonding: etching, priming and bonding in one step

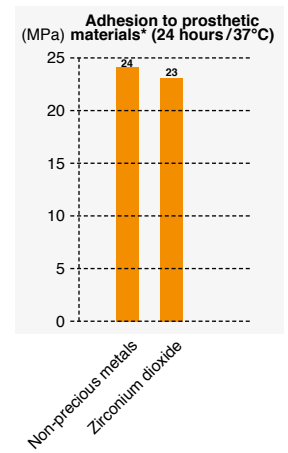
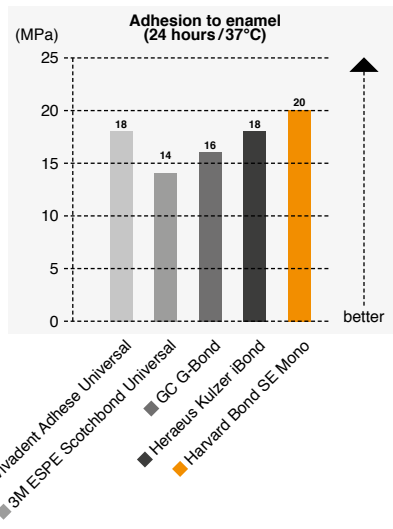
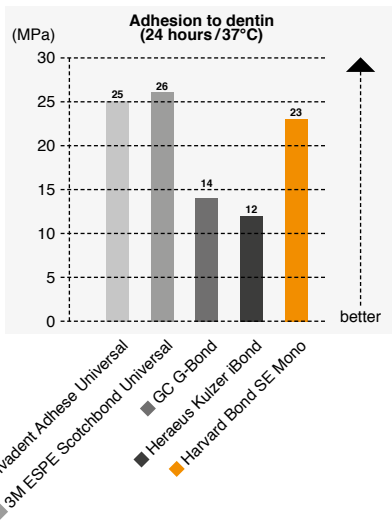
- **Only one layer necessary**
Fast and convenient
- **Strong and long-lasting adhesion**
to enamel and dentin
- **Optimal flow properties**
Excellent wetting and sealing characteristics
- **Low risk of postoperative sensitivity**
- **Easy to use**
Safe and highly reproducible use

1 component, 1 minute, 1 solution!

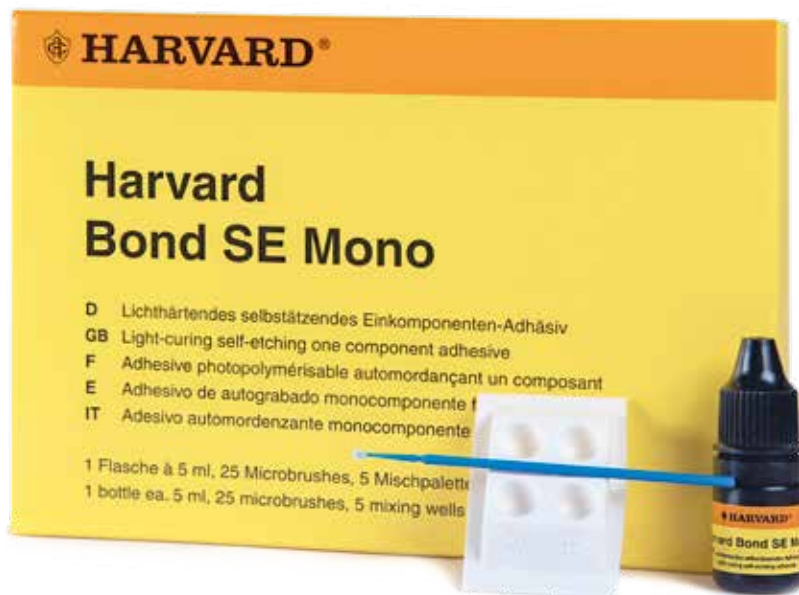
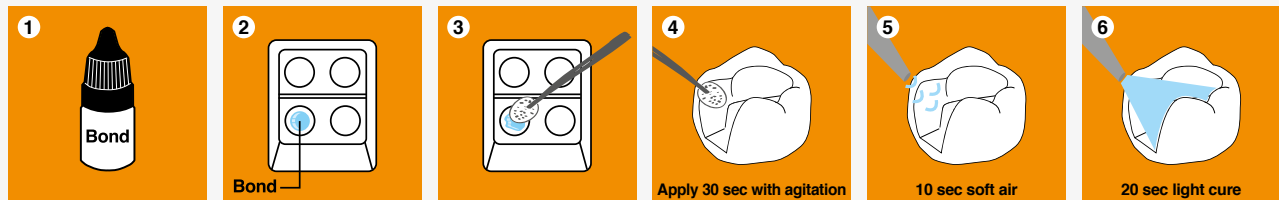


Protects against postoperative sensitivity





Application



| Article information | Order no. |
|--|-----------|
| Harvard Bond SE Mono Kit 5 ml bottle, 25 Microbrush®, 5 mixing wells | 7083604 |
| Harvard Bond SE Mono Refill 5 ml bottle | 7083601 |

| Article information | Order no. |
|---|-----------|
| Harvard Microbrush® refillbag with 50 applicators | 7095156 |

Liability is excluded for all printing errors and omissions. Before using our Harvard products, the respective directions for use should be noticed in every case. All measurements are internal measurements of Harvard Dental International.



Marke und Qualität seit 1892

Harvard Dental International GmbH
 Margaretenstr. 2 - 4, 15366 Hoppegarten, Germany
 Phone: + 49 (0) 30/99 28 978-0
 Fax: + 49 (0) 30/99 28 978-19
 info@harvard-dental-international.de

Harvard Distribution Partner.