

IPS e.max[®] Ceram Selection



all ceramic
all you need



ivoclar
vivadent[®]
passion vision innovation

IPS e.max® Ceram Selection

IPS e.max® Ceram Selection offers new Enamel and Effect materials that will inspire professionals with their brilliant shades and impressive light optical properties.

IPS e.max Ceram Selection comprises twelve materials that are especially designed to give professionals more room for creativity and individuality in the layering technique. The materials are used in combination with the existing IPS e.max Ceram materials and facilitate the creation of individualized characteristics - with the aim to achieve highly esthetic, natural looking restorations.

The renowned dental technicians Oliver Brix (Germany), August Bruguera (Spain) and Gérald Ubassy (France) have substantially shaped the concept on which IPS e.max Ceram Selection is based. The specially shaded materials and their application are the result of many years of successful work with IPS e.max Ceram.

The twelve shades are divided into three groups:

- Special Enamel – shaded Enamel materials
- Light Reflector – light reflecting Effect materials
- Light Absorber – light absorbing Effect materials

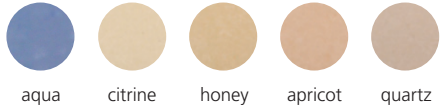


Made to
create nature

Created from passion
and experience ...



A handwritten signature in black ink, appearing to read "Oliver Brix".



... with the aim to copy nature
as closely as possible ...



A handwritten signature in black ink, appearing to read "August Bruguera".



... and the aspiration
to share this knowledge.



A handwritten signature in black ink, appearing to read "Gérald Ubassy".



Special Enamel

The six **Special Enamel** materials are differently shaded Enamel materials that feature an enamel-like translucency.



Light Reflector

The three **Light Reflector** materials are light reflecting Effect materials.



cream



salmon



silk

Light Absorber

The three **Light Absorber** materials are light absorbing Effect materials.



fog



lavender



taupe

Material Selection Guide

Shade and translucency

(Shade tab with a layer thickness of 1 mm)

Group

Special Enamel

aqua

Intensive Enamel material to enhance
along the incisal margins



Positioning example



Product description

...the translucent bluish effect



Area of application



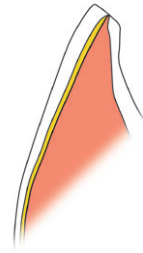
▶ Incisal area



▶ Intermediate area



▶ Incisal area
▶ Intermediate area



▶ Intermediate area
▶ Dentin area



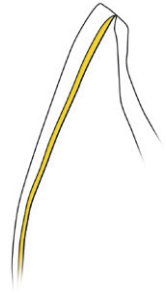
Natural effect



Special Enamel

aqua

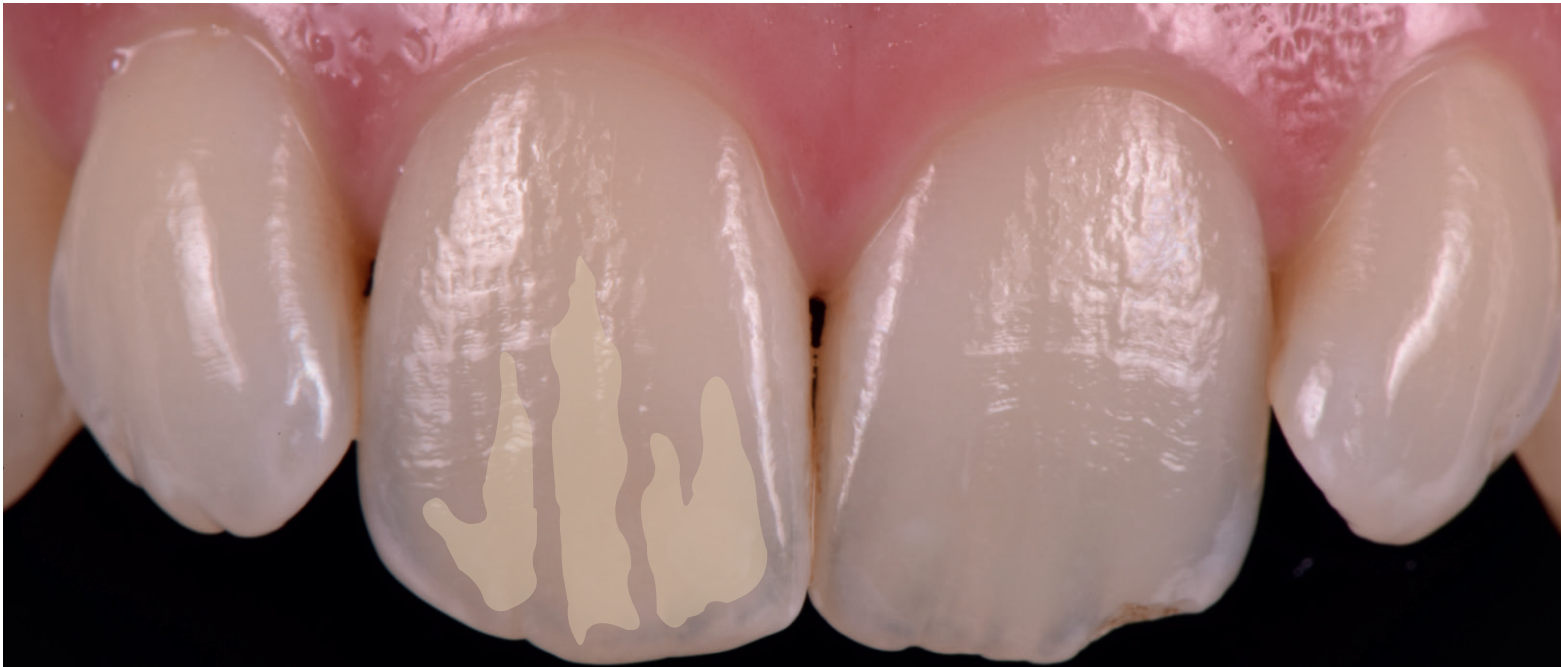
Intensive Enamel material to enhance the translucent bluish effect along the incisal margins



Special Enamel

citrine

Yellowish Enamel material for adjusting the colour saturation and chroma and for giving accentuation to the incisal area



Special Enamel

honey

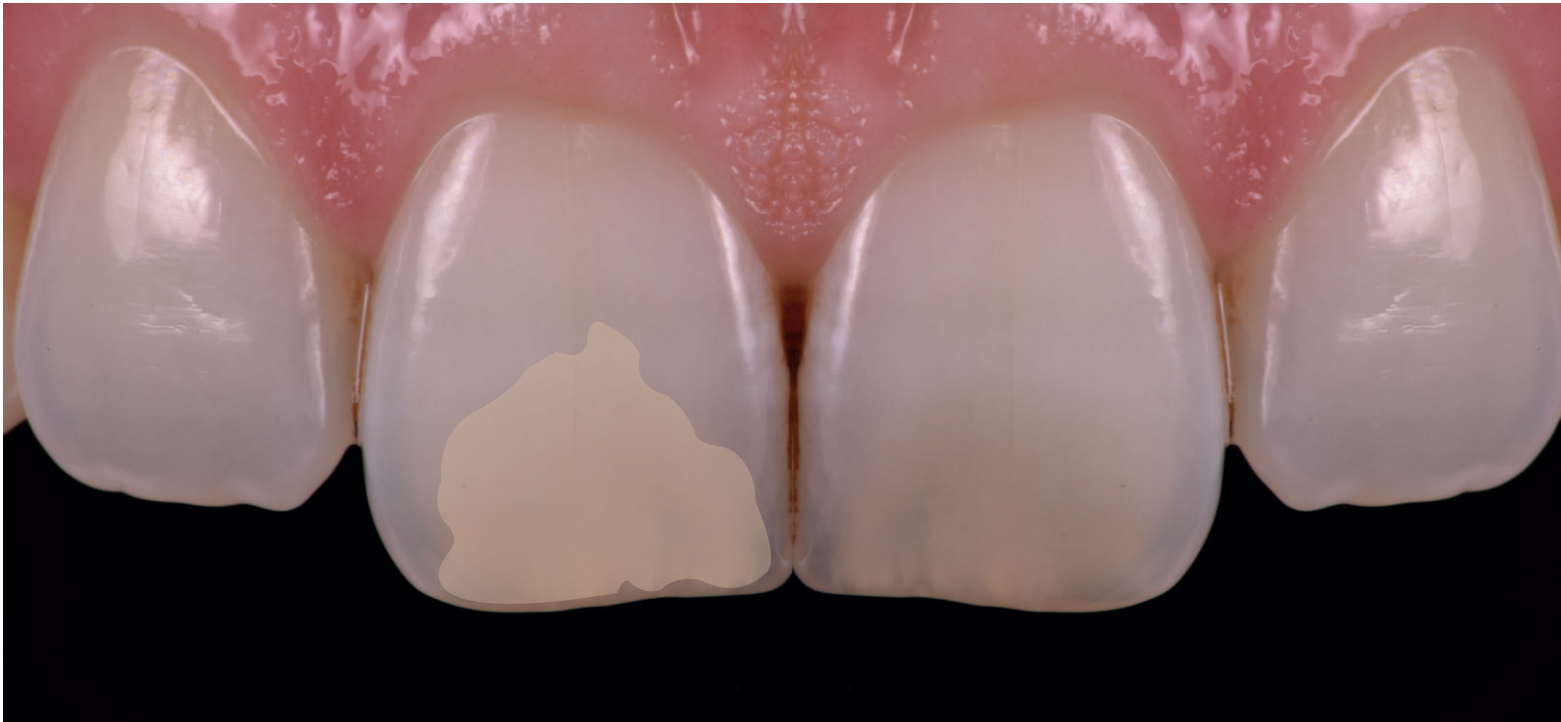
Honey-coloured Enamel material for adjusting the colour saturation and chroma and for giving accentuation to the incisal area



Special Enamel

apricot

Apricot-coloured Enamel material for adjusting the colour saturation and chroma and for giving accentuation to the incisal area



Special Enamel

quartz

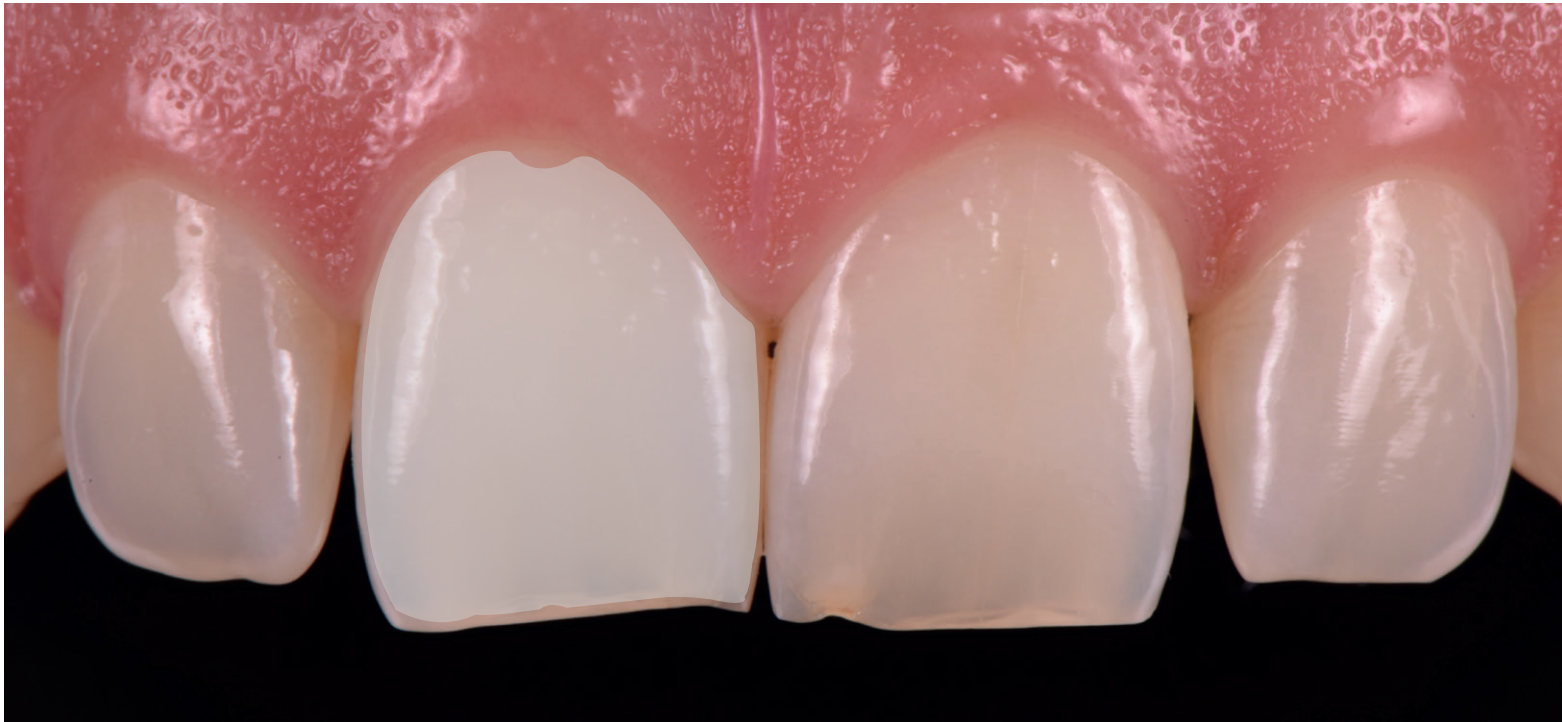
Warm grey Enamel material for adjusting the colour saturation and chroma and for giving accentuation to the incisal area



Special Enamel

diamond

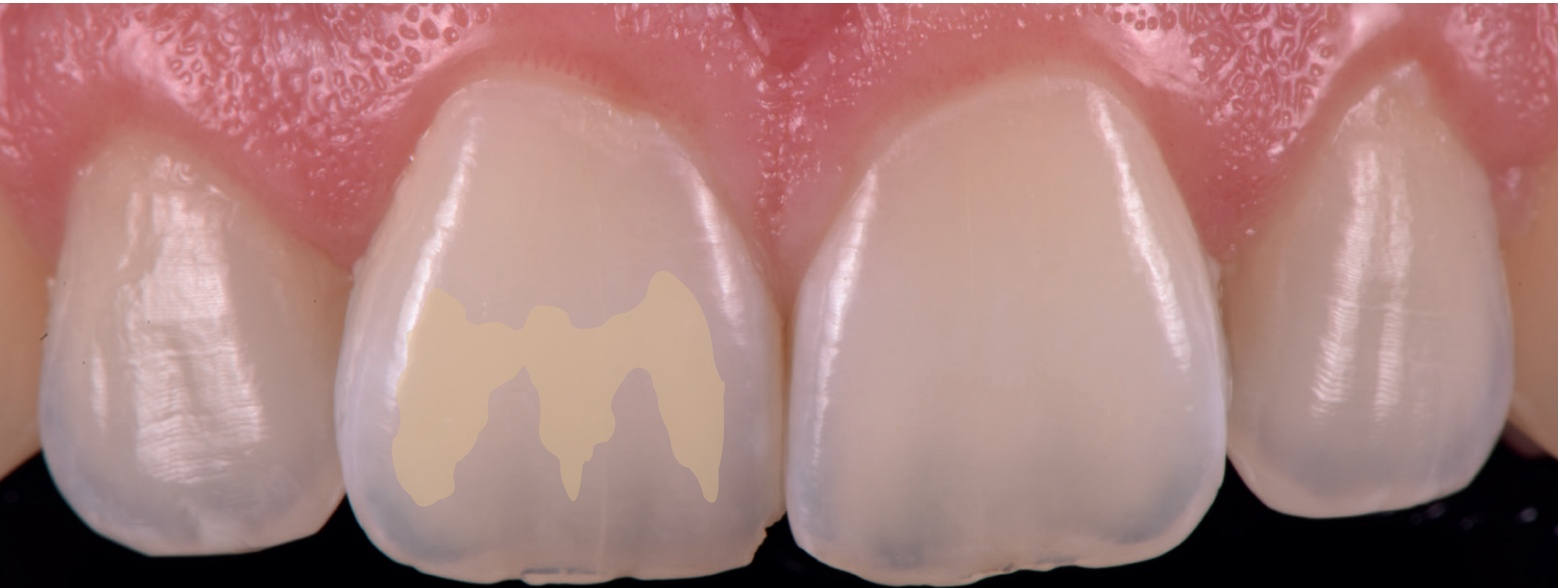
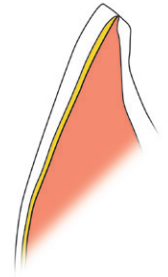
Shade-neutral universal Incisal material for the anterior region



Light Reflector

cream

Cream-coloured Effect material for reproducing colour reflecting areas in the cervical and incisal third

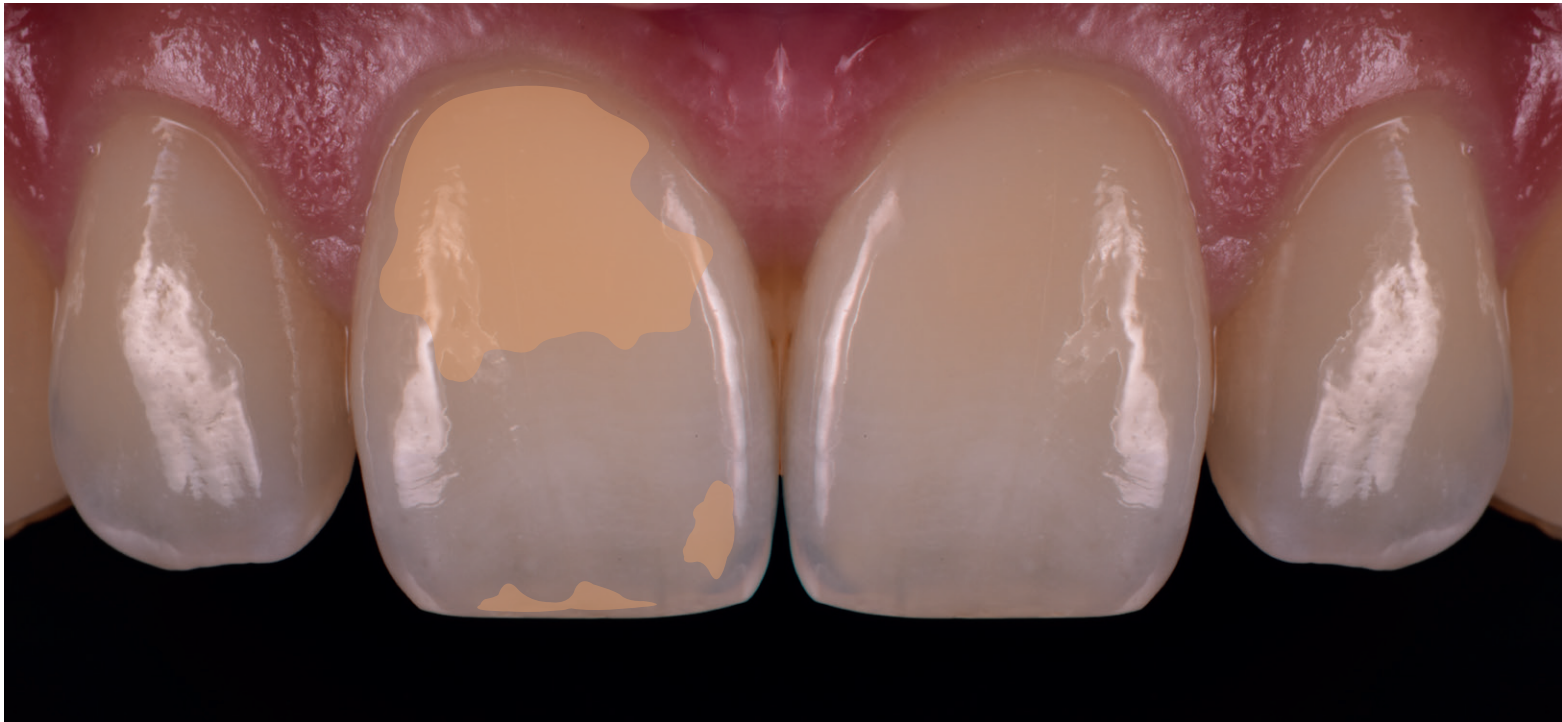
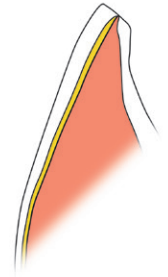




Light Reflector

salmon

Salmon-coloured Effect material for reproducing colour reflecting areas in the cervical and incisal third





Light Reflector

silk

Whitish Effect material for increasing the brightness value in the incisal area

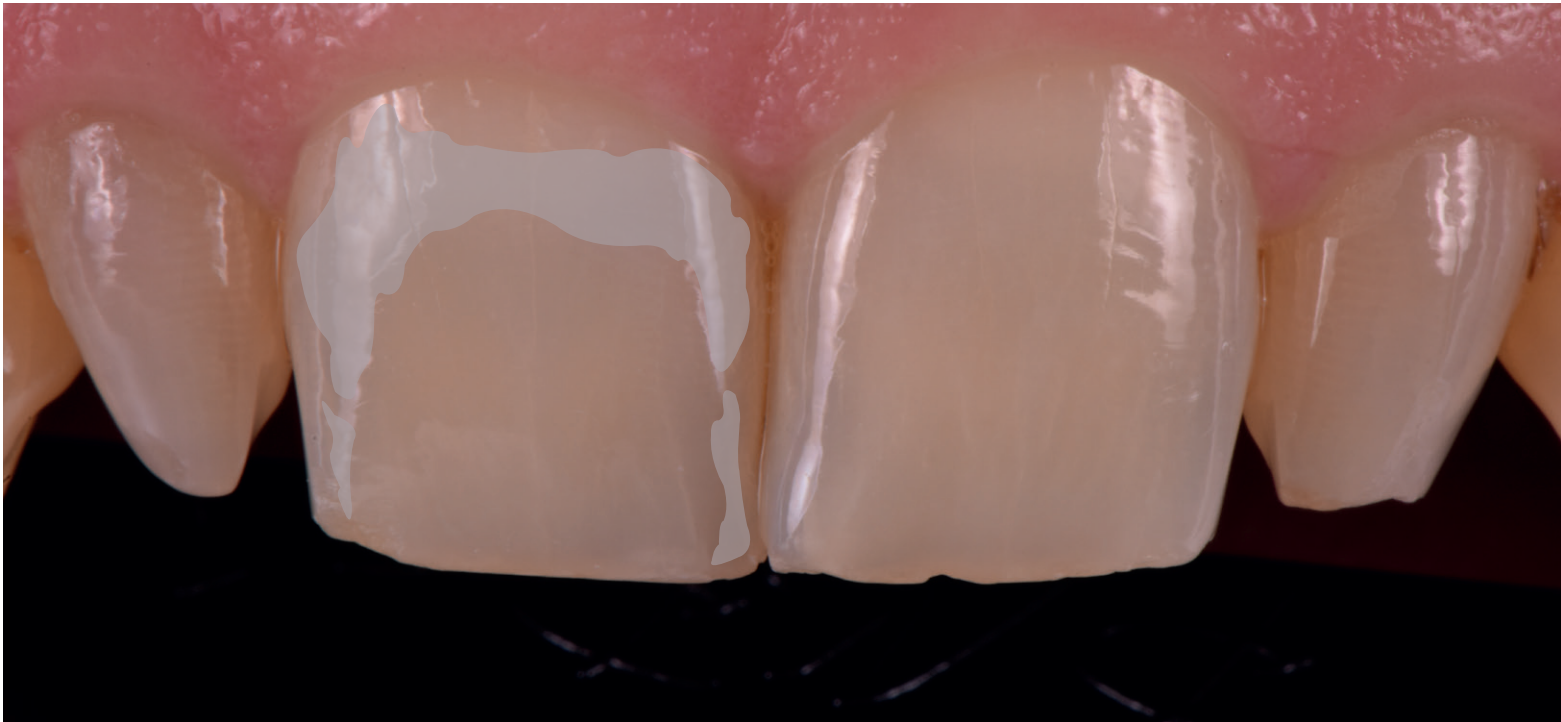




Light Absorber

fog

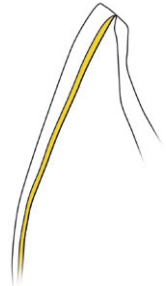
Greyish Effect material for reducing the brightness value in the incisal area



Light Absorber

lavender

Lilac-coloured Effect material for creating absorption areas in the incisal and cervical third and in the proximal areas

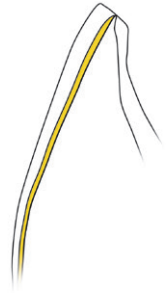




Light Absorber

taupe

Lilac-brown Effect material for creating absorption areas in the incisal and cervical third and along the proximal areas



Delivery forms

IPS e.max® Ceram Selection Kit

- IPS e.max Ceram Special Enamel, 1x 5 g of each shade: aqua, citrine, honey, apricot, quartz, diamond
- IPS e.max Ceram Light Reflector, 1x 5 g of each shade: cream, salmon, silk
- IPS e.max Ceram Light Absorber, 1x 5 g of each shade: fog, lavender, taupe



Refills



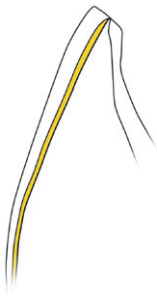
**IPS e.max Ceram
Special Enamel, 1x 5 g**
Shades: aqua, citrine, honey,
apricot, quartz, diamond



**IPS e.max Ceram
Light Reflector, 1x 5 g**
Shades: cream, salmon, silk



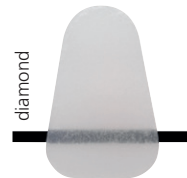
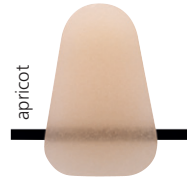
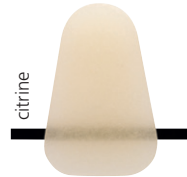
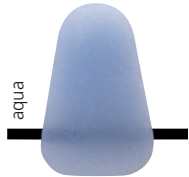
**IPS e.max Ceram
Light Absorber, 1x 5 g**
Shades: fog, lavender, taupe



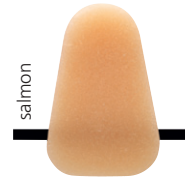
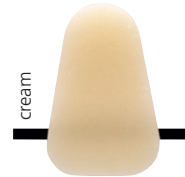


IPS e.max® Ceram Selection

Special Enamel



Light Reflector



Light Absorber

